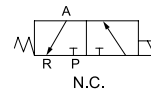


3通直动型电磁阀(微型) 3-Port Direct Operated Solenoid Valve (Miniature) Series **KGM114**



KGM114-L



KGM114-M



规格 Specifications

型号 Model	KGM114
使用流体 Fluid	过滤压缩空气 Filtered compressed air
使用压力范围 Operating pressure range (MPa)	0~0.7
口径 Orifice (mm)	Ø0.7
环境及流体温度 Ambient and fluid temperature	-5~50°C (未冻结 No freezing)
响应时间 Response time (0.5 MPa)	10 ms
最大工作频率 Maximum working frequency	5 c/sec
* 润滑 Lubrication	不需要 Not required
额定电压 Rated voltage	DC12V, DC24V
容许电压波动范围 Permissible voltage variation	-5%~10% 额定电压 -5%~10% of rated voltage
功率消耗 Power consumption	1.3 W

* 如需润滑请使用透平 1 号油 ISO VG32#。Please use 1st Grade Turbine Oil ISO VG32# if necessary.

型号表示方法 How to Order

KGM114 - **L** - **DC12V** - **Z**

接电方式
Electrical entry

-	直接出线 Grommet with flying leads
L	垂直插座式 90° connector
M	平行插座式 180° connector

* 电线型号GM-L10 长度1米, 可选择其他长度。
Cable model GM-L10, 1 m cable length, other length customized.

自排 Auto exhaust

-	无 None
Z	带自排 With auto exhaust

额定电压
Rated voltage

DC12V
DC24V

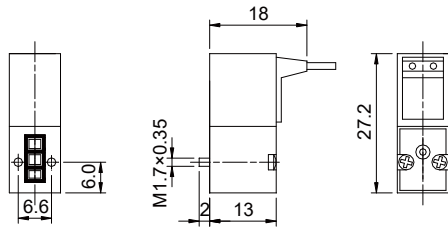
3通直动型电磁阀(微型)

3-Port Direct Operated Solenoid Valve (Miniature)

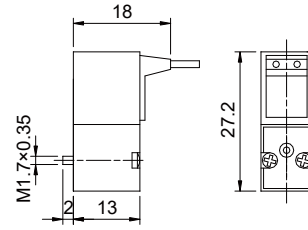
Series KGM114

外形尺寸图 Dimensions (mm)

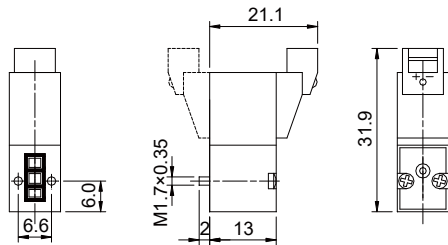
KGM114



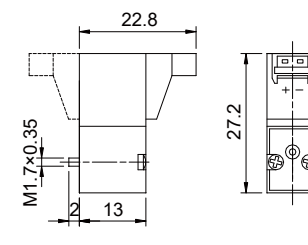
KGM114-*-Z



KGM114-M

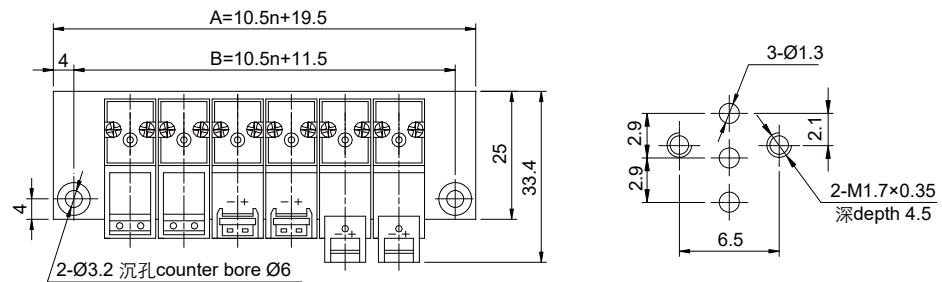


KGM114-L

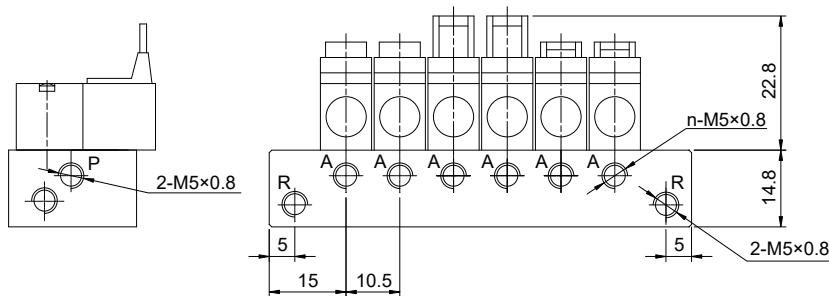


2

汇流板 Manifold



n=位置数No. of stations



位置数 No. of stations n	2	3	4	5	6	7	8	9	10
A	40.5	51	61.5	72	82.5	93	103.5	114	124.5
B	32.5	43	53.5	64	74.5	85	95.5	106	116.5